



Working on
behalf of

HS2

Bockendon Road - road closure (second phase)

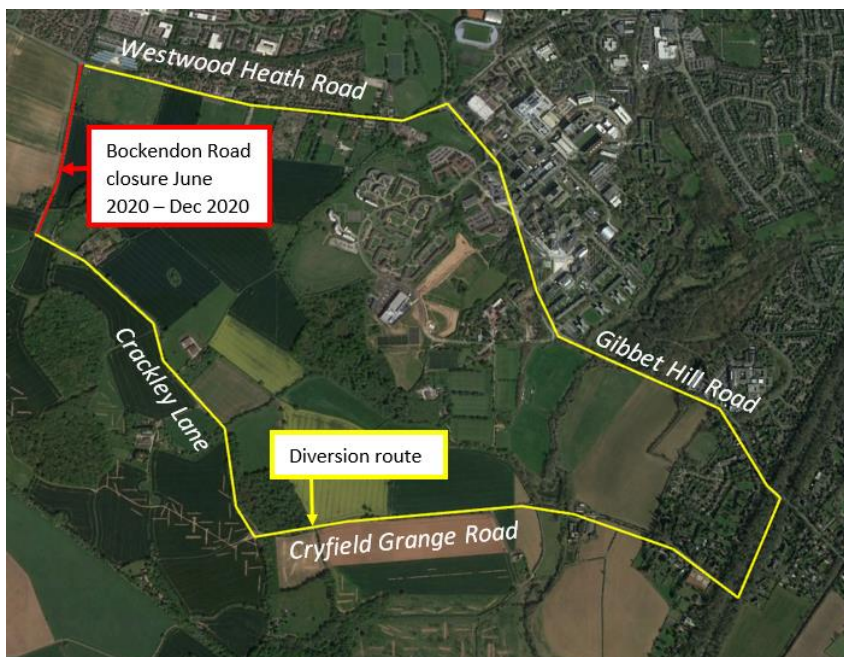
June 2020 | www.hs2.org.uk

High Speed Two (HS2) is the new high speed railway for Britain. Initial works have now started and are carried out by LM – a joint venture between Laing O'Rourke and J. Murphy & Sons.

LM are continuing works to create a haul road for the HS2. The next phase of works still requires **Bockendon Road to be closed during the day, Monday to Friday, 9:30am to 3:30pm** between Westwood Heath Road and Crackley Lane **until the end of the year**. This is to create a safe zone whilst carrying essential out works

Access will be maintained for households and businesses along the route. Below is the updated local diversion that is now in place.

Please register with www.hs2inwarwickshire.co.uk or go to one.network for live traffic information. All dates are subject to change



If you have a question about HS2 or our works, please contact our helpdesk on 08081 434 434 or email HS2enquiries@hs2.org.uk

Notification



Duration of works

From June 2020
until Dec 2020.

Road closed Mon to Fri
with daytime working
hours 9.30am to
3.30pm.

Our contractors may
also be on site for up
to one hour
beforehand and after
to set up and
pack up the site.

What to expect

Some noise from on-
site machinery during
working hours.

Maintained access for
pedestrians,
emergency services
and to properties
/businesses along the
route.

What we will do

Keep

one.network and
hs2inwarwickshire.co.uk

up-to-date with any
changes.

Keeping you informed

We are committed to keeping you informed about work on HS2. This includes ensuring you know what to expect and when to expect it, as well as how we can help.

Residents' Charter and Commissioner The Residents' Charter is our promise to communicate as clearly as we possibly can with people who live along or near the HS2 [route](#).

www.gov.uk/government/publications/hs2-residents-charter

We also have an independent Residents' Commissioner whose job is to make sure we keep to the promises we make in the Charter and to keep it under constant review. Find reports at:

www.gov.uk/government/collections/hs2-ltd-residents-commissioner

You can contact the Commissioner at: residentscommissioner@hs2.org.uk

Construction Commissioner

The Construction Commissioner's role is to mediate and monitor the way in which HS2 Ltd manages and responds to construction complaints. You can contact the Construction Commissioner by emailing:

complaints@hs2-cc.org.uk

Property and compensation

You can find out all about HS2 and properties along the line of route by visiting:

www.gov.uk/government/collections/hs2-property

Find out if you're eligible for compensation at:

www.gov.uk/claim-compensation-if-affected-by-hs2

Holding us to account

If you are unhappy for any reason you can make a complaint via the helpline. For more details on our complaints process, please visit our website:

www.hs2.org.uk/how-to-complain

HS2 and the COVID-19 outbreak

We are continually reviewing the works on our construction sites in line with Government and Public Health England (PHE) advice on dealing with COVID-19. The Government's current COVID-19 strategy makes clear that construction activity can continue as long as it complies with this guidance.

The health and safety of our workforce and the communities we affect is our key priority. Please be assured that those sites that are currently still working are doing so because they can operate within PHE and construction industry guidelines

High Speed Two (HS2) Limited, registered in England and Wales.

Registered office: Two Snowhill, Snow Hill Queensway, Birmingham B4 6GA.

Company registration number: 06791686. VAT registration number: 181 4312 30.

Contact Us

If you have any questions about this notification of works, please get in touch.



24/7 Freephone **08081 434 434**



Minicom **08081 456 472**



Email HS2enquiries@hs2.org.uk

Write to:

FREEPOST

HS2 Community Engagement

Website www.hs2.org.uk

To keep up to date with what is happening in your local area, visit:

www.hs2inwarwicks.co.uk

Please contact us if you'd like a free copy of this document in large print, Braille, audio or easy read. You can also contact us for help and information in a different language.

HS2 Ltd is committed to protecting personal information. If you wish to know more about how we use your personal information please see our Privacy Notice

<https://www.gov.uk/government/publications/high-speed-two-ltd-privacy-notice>